



WELDER



# WELDER

WELCOME	3
FLOOR PLAN	5
THE VENUE	8
EVENT MANAGEMENT & PLANNING	11
CATERING	13
BEVERAGE	15
SUPPLIERS	16
TERMS & CONDITIONS	18



## WELCOME TO THE WELDER

Discover something new around every corner of this eclectic destination in the heart of South Town. The Welder is an elegant space for parties, corporate functions and intimate celebrations which evokes urban chic and effortless grace for when your event needs to go above and beyond.

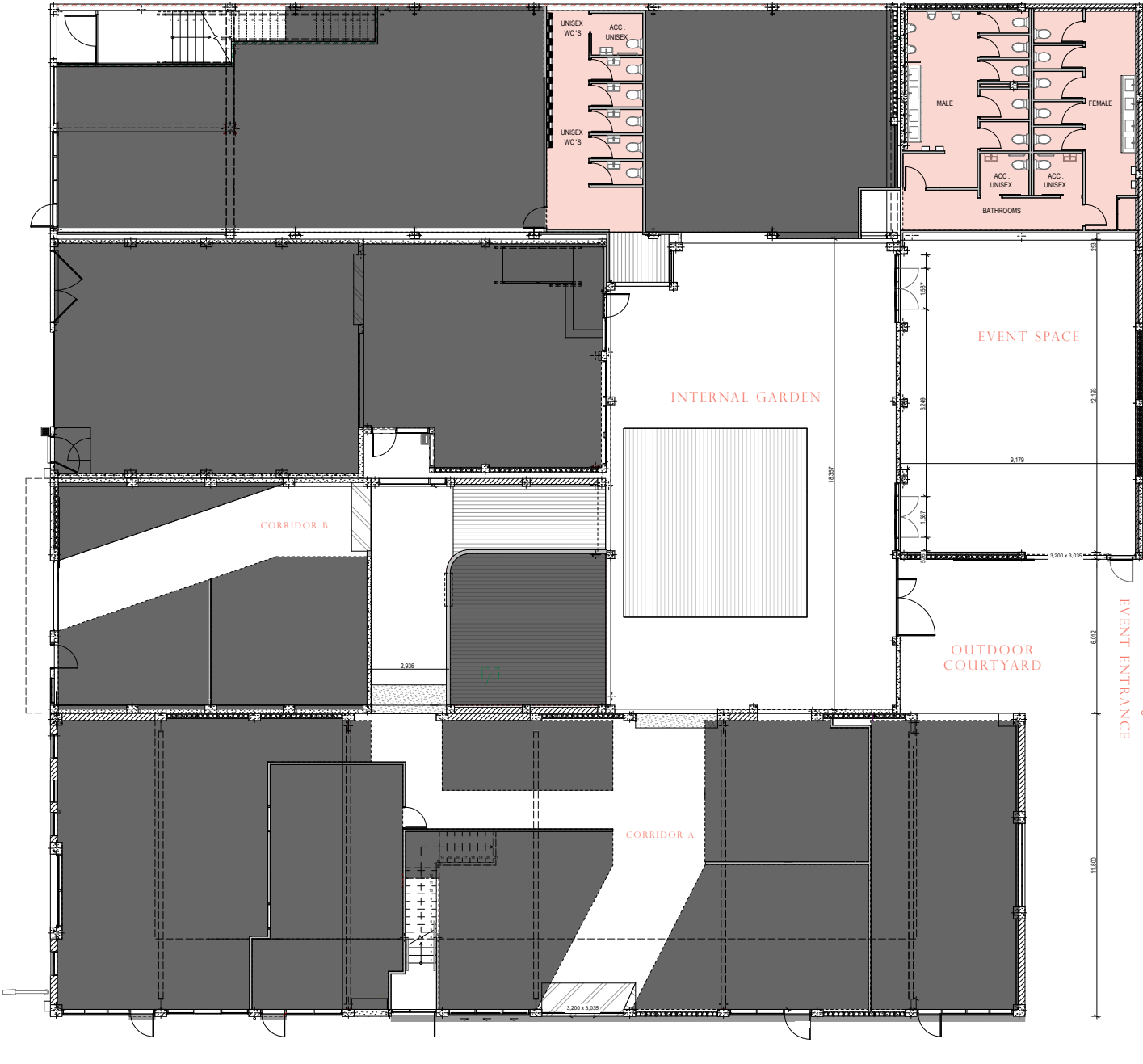
An eclectic mix of old and new, The Welder can be intimate and elegant or lively and loud – it's a fun space full of personality, ready for anything to make your occasion memorable as we believe memorable events are created when your ideas can shine in the right place, at the right time.

At The Welder we are all about crafting special moments and memories with industrial charm in a sleek and sophisticated setting.



THE VENUE

We are all about crafting special moments and memories with industrial charm ————— Photograph // Charlotte Sowman Photography





## FLOOR PLAN





THE VENUE

*The Welder can be intimate and elegant or lively and loud ——— Photograph // Susannah Blatchford*

## THE VENUE

The Event Space is located at the rear of the Welder building; a 113sqm industrial space with recycled heritage wooden flooring. This is the perfect blank space to create your special event.

The venue hire for the space midweek is \$2,000 incl. GST and \$3,000 incl. GST on a Friday + Saturday - this is based on exclusive hire of the Event Space and is inclusive of the below:

### VENUE HIRE INCLUSIONS

- Event Manager  
*to assist with any planning throughout the event process*
- Event Supervisor  
*to attend to all on the day requirements*
- In-house sound system
- Security guard  
*(if required, for events over 70)*
- WIFI access
- Bar staff + Duty Manager
- Moveable pop up bar + Liquor license  
*(basic glassware included, extra glassware will be outsourced and on-charged)*
- Post venue clean
- Rubbish removal

### CAPACITY NUMBERS

- 125 PAX ————— Cocktail style *(inside & outside courtyard area)*
- 100 PAX ————— Cocktail style *(inside only)*
- 70 PAX ————— Seated

### ADDITIONAL EXTRAS

- Catering
- Beverage
- Furnishings
- Styling
- Audio Visual Equipment





THE VENUE

Our event space is the perfect blank canvas to create your event ————— Photograph // Susannah Blatchford



THE VENU



## EVENT MANAGEMENT & PLANNING

We can work with you as much or as little as required to plan the best party your guests have ever experienced.

From a small cocktail party, birthday celebration to a conference or seminar, engagement party or wedding we can help tailor and personalise the details for you and your guests.

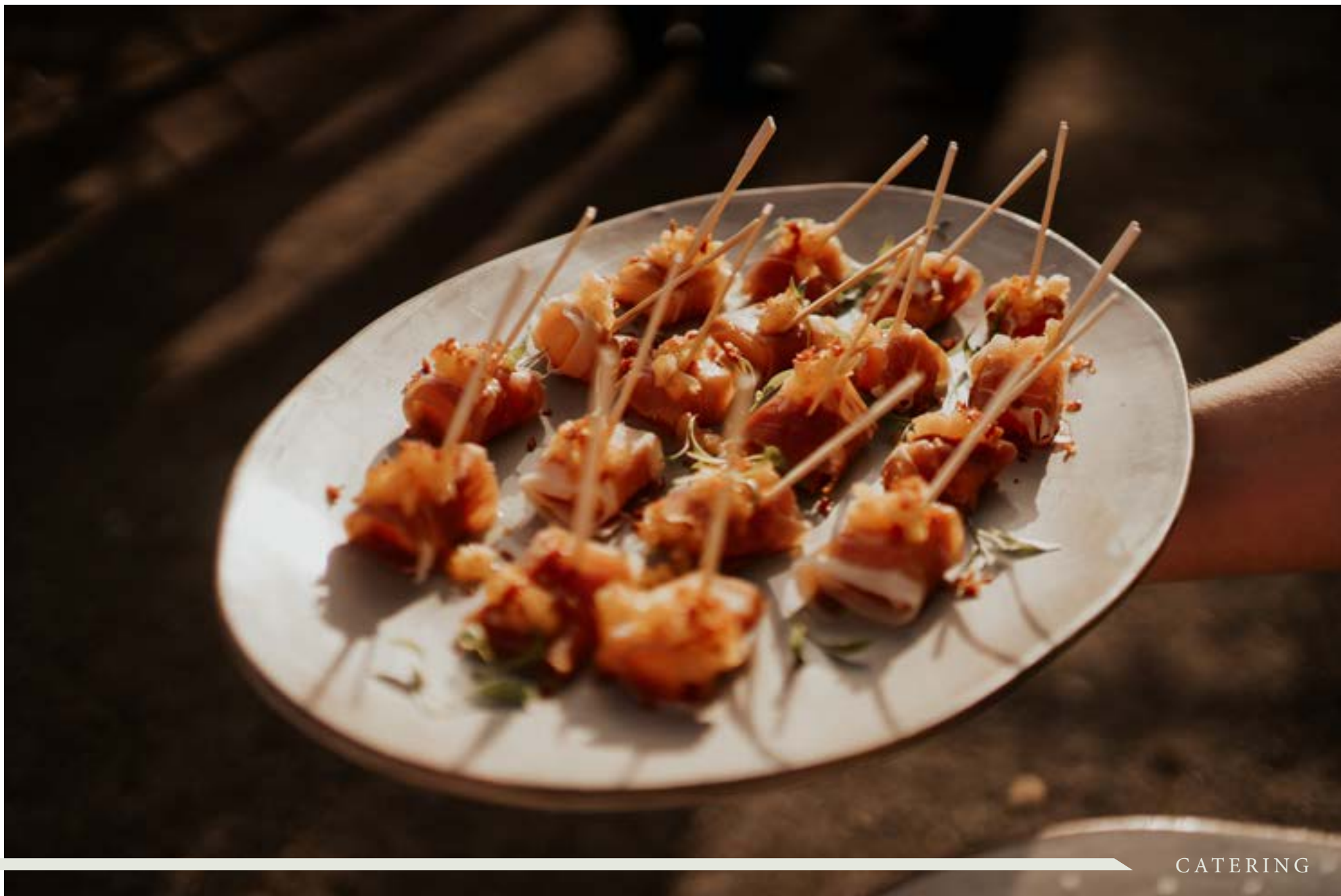
At The Welder functions and events are what we understand and love, we are here to help you every step of the way in the planning and coordinator process.

We also work with a number of amazing event planners and stylists and can put you in the right direction if you would like full planning assistance.

---

ONE THING WE KNOW  
IT'S HOW TO THROW A  
DAMN GOOD PARTY





CATERING



## CATERING

Welder Events uses outside caterers to supply the catering for the venue. We have a number of preferred suppliers that we will happily recommend to our clients, or you are welcome to research this yourselves.

We will assist you along the way with all of your menu planning and finding the right caterer for your event. Sample menus from our preferred suppliers will be available to assist in making a decision on the venue.

Your selected caterer will need to be self-sufficient providing their own kitchen area to work out of as we have no kitchen facilities onsite.  
*(for example - kitchen marquee)*

---

## SUGGESTED CATERERS

Bespoke Chef  
Bottle + Stone Catering  
Crisp + Vale  
Moveable Feats  
White Tie | Catering Department



BEVERAGE

Our team is there to assist and create the best drinks list for your special events — Photograph // Susannah Blatchford





## BEVERAGE

There is no party without an attractive drinks list and our team is there to assist and create the best drinks list for your special events.

Whether it is local or international wines, free flowing champagne or a creative cocktail offering your event manager will work with you to personalise a drinks list to suit you and your event.

Welder Events have exclusivity to the Bar operation due to holding the Liquor Licence for the event space. Basic Glassware are included in the venue hire along with a duty manager and bar staff who will oversee the event and beverage service. Standard host responsibility rules will be applicable.

---

Full beverage list available on request

## SUPPLIERS

With your guidance and vision we will point you in the right direction of suppliers we have worked with and put trust in to create the event exactly as you envisioned it, bringing to life your special day.

### AV COMPANIES

Hangup Entertainment  
Insight Audio Visual  
Spectrum

### CAKES

Cakes by Anna  
Full-Time Tart  
The Cake Eating Company

### EVENT COORDINATION & PLANNING

Blank Space Events  
Christchurch Weddings  
Collective Concepts  
Emma Newman  
Event Goals  
I Do For You

### EVENT STYLING & THEMING

Design Studio  
Hayley and Co  
Kim Chan  
The Event Boutique  
The Little Hire Company

### FLORISTS

Bourbon Rose  
Mrs Bottomley's Flowers  
Native Botanics  
The Flower Press

### FURNITURE & SMALL HIRE

Blank Space Events  
Event Hire  
Loula Hire  
Party Warehouse  
The Hirer  
The Little Hire Company  
Truly Yours

### MUSIC – BANDS

Assembly Required  
Corner Sounds  
Gumbo No. 5  
Nick Lee  
Puree  
Rattle and Strum  
Tina and the Tuners

### MUSIC – DJ

Boogie Beats  
Dj Pulse

### PHOTOGRAPHY

Cassandra Kovacs  
Emily Hugo  
Jade Spencer  
Sarah Clements  
Sophie Isabella  
Susannah Blatchford

### STATIONERY & SIGNAGE

Paperweight Design  
The Little Paper Store



THE VENUE

# TERMS & CONDITIONS

## OPERATIONAL HOURS

The Welder is available for venue hire Monday to Sunday between the hours of 7.00am – 12.00am. The venue is licenced until 12.00am with beverage service to conclude at 11.30pm to ensure all guests have vacated the venue by 12.00am and all staff and contractors associated with the event by 1.00am. If you require earlier or later pack in and out times this will need to be arranged and approved with the Event Manager.

## PACK IN / SET UP

The clients access time will be agreed with the Event Manager based on the venue hire. If there is no event booked the day before then access may be arranged for set up the day before at the discretion of management.

## PACK DOWN

All pack down of the venue is to be completed at the end of the event unless previously arranged with management. If there is no event the following day equipment may be stored in the venue overnight and collected the following morning by 10.00am this must be discussed and proved with management prior to the event.

## CATERING

Outside caterers will need to be self-sufficient providing their own kitchen area to work from and all the relevant documentation to cover health and safety and food preparation certification. Your Event Manager will be able to assist with this where required. Catering must be provided by qualified caterers and all health and safety requirements followed.

## BEVERAGE

Welder Events have exclusivity to the Bar operation due to holding the Liquor Licence for the event space. Beverage staff and a duty manager are included in the venue hire fee – staffing numbers will be discussed once numbers and event details are confirmed.

## SECURITY

The venue hire fee is inclusive of a security guard to be on site for your event, it is the event managers discretion as to if your event requires a security guard. They will also advise if additional guards will be required for your event and this will be on charged to the client.

## TENTATIVE BOOKINGS

Tentative bookings can be penciled into the calendar and will be held for 1 month, unless the date is queried by another prospective client. In this case you will have 48 hours to confirm your booking including the payment of your deposit.

## CANCELLATIONS

If the client cancels their function or event, the cancellation must be provided to the Event Manager in writing. If in the instance an event is postponed the event deposit will be transferable to the new date selected within 12 months of the booking.

In the unlikely event that The Welder is unable to hold your event due to unforeseen circumstances you would be advised immediately. Alternative venue options and postponement dates would be the first course of action followed by cancellation discussions.

## COVID

We understand that this is an uncertain time for everyone and things can change quickly. Unfortunately all deposits paid are 100% non-refundable including covid cancellations. If you are to reschedule your event with us a new deposit will be required to secure the date.

## PAYMENTS

On confirmation of your event, your Event Manager will send you a full terms and conditions and booking confirmation form along with your deposit invoice. These forms are required to be completed and payment received in order to confirm your booking. A non-refundable deposit of \$500 is required to secure your event booking.

Full terms and conditions will be issued to the hirer upon confirmation of booking and paying event deposit.





THE VENU



# WELDER

*20 - 26 Welles Street, Christchurch, Canterbury 8011  
events@thewelder.nz // [www.thewelder.nz/events-space](http://www.thewelder.nz/events-space)*